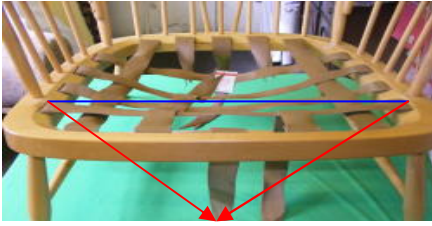


Fitting Peg and Slot webbing straps

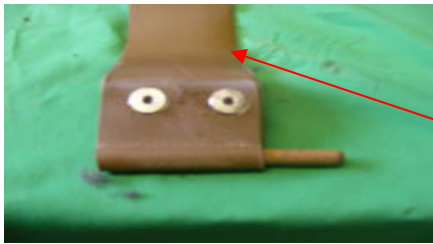
As in ERCOL and similar



To measure for replacement straps measure from the top of the slot inside slot to opposite inside slot



Some webs will look as above on settees again all we need is the length between slots and number of loops for similar to above we would charge for 3 straps



The old straps may have numbers on them we can make up from these numbers but we prefer measurements between the slots as the strap in the chair may not be the original for the chair/settee



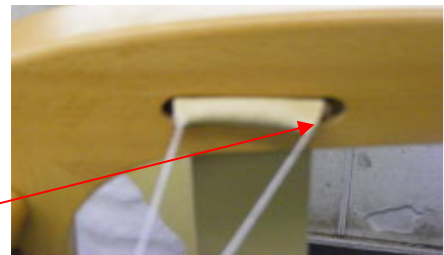
Cut through old webs and remove dowels as you will need them for replacing new straps

New straps push loop through slot at one end, usually the back, push dowel and pull taught



On other end of strap thread a piece of string through loop you will need to lubricate the strap end and the hole to let the strap go through easier we use silicone spray a screwdriver will also be useful

Push the dowel into loop this is where the screwdriver will be helpful



Pull strap through with string, you might find this easier with an extra pair of hands to push the straps through, push the dowel through the loop remove the string and your strap is secure



Fit the remaining back to front straps using the same method, the side to side straps are weaved as above for added strength

We can make to any length and 3 widths the most popular 51mm (2"), 38mm (1 1/2") and 19mm (3/4") and as the top right picture where there are 4 loops on one strap where the exact size you require is not listed you can contact us by email or phone



The Completed Chair